



A PlatformDIGITAL™ Solution

# Network Hub

Platform  
**DIGITAL™**

## Rewire the Network

Digital business requires a new enterprise network architecture, one that is localized at global points of business presence, consolidates traffic flows and end point management into network hubs, and implements direct interconnection.

This reduces latency and increases throughput, necessary to support the exploding volume and highly interactive traffic behaviors of digital business workflows. The strategy brings users, systems, and the network to the data, which removes barriers of data gravity and creates centers of data exchange to scale digital business.

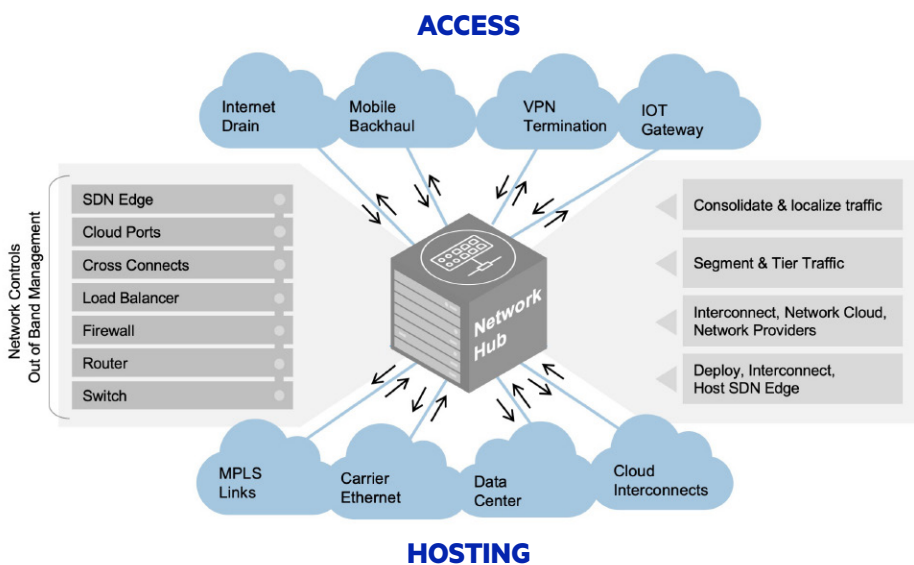


Fig 1. PlatformDIGITAL™ Network Hub Solution

## IMPLEMENT NETWORK HUBS ON PlatformDIGITAL™

The global data center platform for deploying Network Hubs to:

- Interconnect ecosystems of networks, clouds and partners
- Secure multi-cloud access with direct interconnection (physical and virtual)
- Segment, tailor and provision interconnection matched to business needs in terms of type, speed, destination, participant or time of day
- Deploy, interconnect and host SDN edge infrastructure at points of ingress/egress globally to enable dynamic network management

## NETWORK HUB AT A GLANCE

Optimize network performance by interconnecting network traffic flows at global points of business presence to create centers of data exchange for scaling digital business.

## KEY BENEFITS

- Enhance network security and resiliency
- Reduce latency and increase throughput
- Increase bandwidth per employee cost-effectively
- Enable performant multi-cloud connectivity
- Improve global traffic management
- Accelerate global deployment of SDN capabilities



## NETWORK HUB STARTER KIT

This turnkey bundle includes the necessary components and services to rapidly plan, deploy and scale your Network Hub. The pre-configured solution accommodates a typical enterprise deployment of a network hub to optimize performance, security and resiliency of a specific network zone or subnet. This enables enterprises to rewire the network as a center of data exchange in support of scaling digital business.

### CONFIGURATION DETAILS\*

#	COMPONENT	PURPOSE
1	125 Square Feet Private Cage	Security (secure physical isolation)
2	5 Cabinets, 4kW/Cabinet	Capacity (fit for purpose)
3	12 Fiber Cross-Connects package	Direct Connectivity (physical)
4	2 x 10G Service Exchange Ports	Ecosystem Connectivity (virtual)
5	Card Reader	Security (secure physical access)
6	Installation & Fit Out Services	Design/Install (speed to deploy)
7	Remote Hands Bundle (5 hours)	Move/add/change (ease to maintain)

\*Additional features available as add-ons for an incremental fee.

### STARTER KIT AT A GLANCE

Get started quickly with the pre-packaged Network Hub solution configuration based on best practices to accelerate deployment and results.

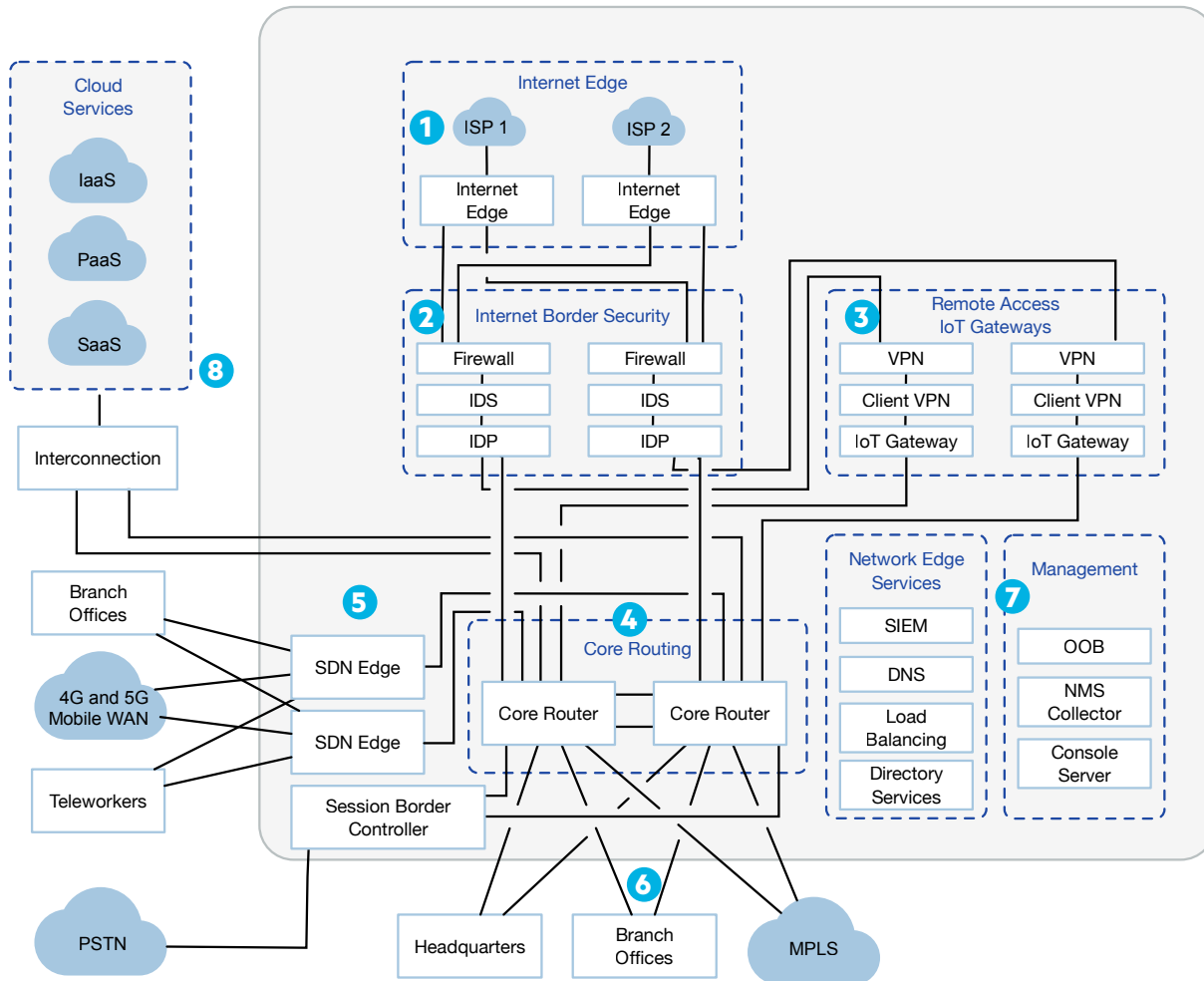
### FEATURE SET

- Secure colocation for network footprint (expandable)
- Redundant connectivity to carriers, clouds and partners
- Global access to operational environment via portal/APIs
- Streamlined contracting vehicle for multi-site deployments
- Cabinet installation and remote hands services
- Industry Standard Compliance
- Discounted pricing for starter kit configuration

### PROVEN APPROACH

Quickly realize the benefits from your Network Hubs deployed globally on PlatformDIGITAL™, by leveraging our Pervasive Datacenter Architecture (PDx™) strategy. A step by step strategy to create the new IT architecture required to solve digital transformation.

## NETWORK HUB REFERENCE ARCHITECTURE



**1** Multiple ISPs and Internet Exchanges are connected to edge routers to provide redundant Internet access to the customer's environment.

**2** Enterprise security stack is deployed to border between the enterprise network and internet resources.

**3** IoT, VPN, and Client VPN devices are deployed behind the enterprise security stack to provide gateway services to remote devices, users and partners.

**4** Network Core layer provides enterprise routing and segmentation. Highly scalable data center routing and switching platform ties all enterprise resources together.

**5** Tie remote locations and users to the enterprise using reliable and cost effective network solutions such as broadband internet, cellular (4G or 5G), or other WAN technologies.

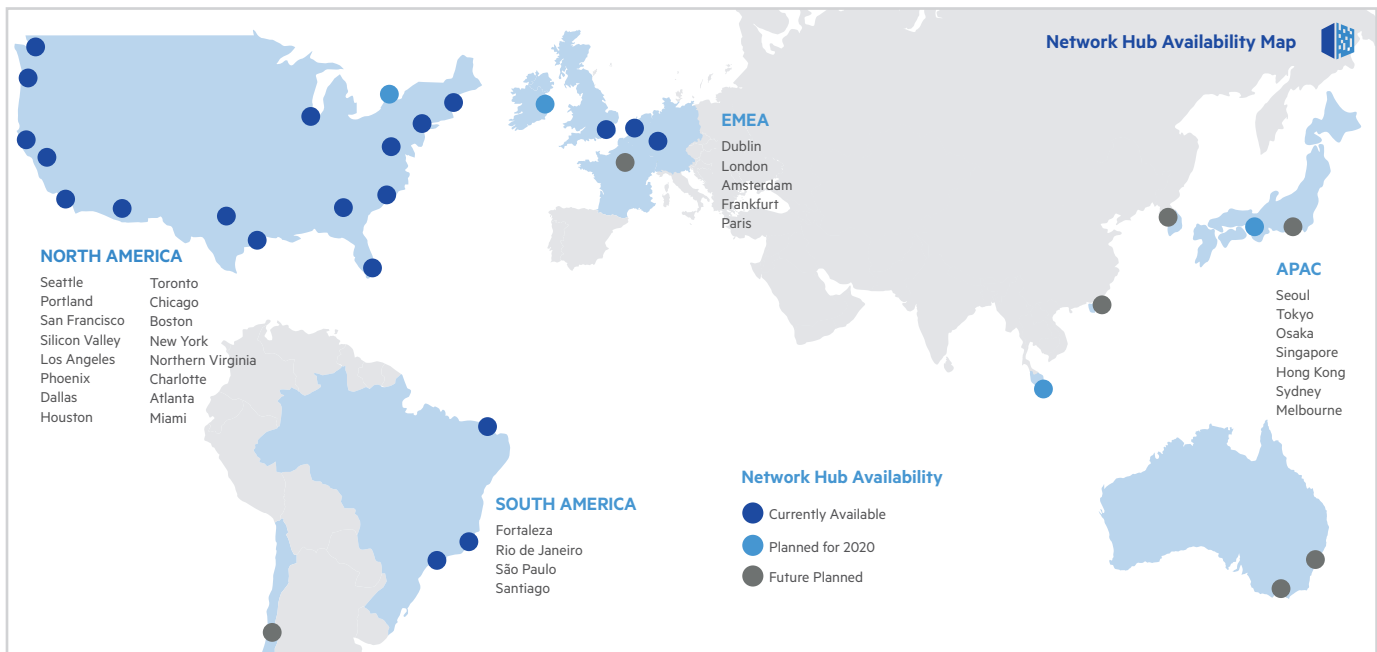
**6** Leverage services such as carrier ethernet to tie remote locations as well as headquarter locations to the Network Hub. Also, continue to leverage MPLS network for applicable sites or as part of the migration strategy.

**7** Critical applications services can be located inside of the Network Hub to reduce latency and provide a distributed architecture for these services.

**8** Securely interconnect to cloud ecosystem including leading IaaS, PaaS and SaaS providers. Build hybrid and multi-cloud deployments. Provide cloud services with enterprise security stack and controls adjacent to the hub.



## IMPLEMENT NETWORK HUBS GLOBALLY ON PlatformDIGITAL<sup>TM</sup>



### WANT TO LEARN MORE?

**P** (877) 378 3282

**E** [platformdigital@digitalrealty.com](mailto:platformdigital@digitalrealty.com)

[www.digitalrealty.com/platform-digital](http://www.digitalrealty.com/platform-digital)

### ABOUT DIGITAL REALTY

Digital Realty supports the data center, colocation and interconnection strategies of customers across the Americas, EMEA and APAC, ranging from cloud and information technology services, communications and social networking to financial services, manufacturing, energy, healthcare and consumer products. To learn more about Digital Realty, please visit [digitalrealty.com](http://digitalrealty.com) or follow us on LinkedIn or Twitter.